

# Agilox



**TRUST THE  
WORLD'S EASIEST  
AMR SOLUTIONS.**

REDEFINING MATERIAL HANDLING

[agilox.net](https://agilox.net)

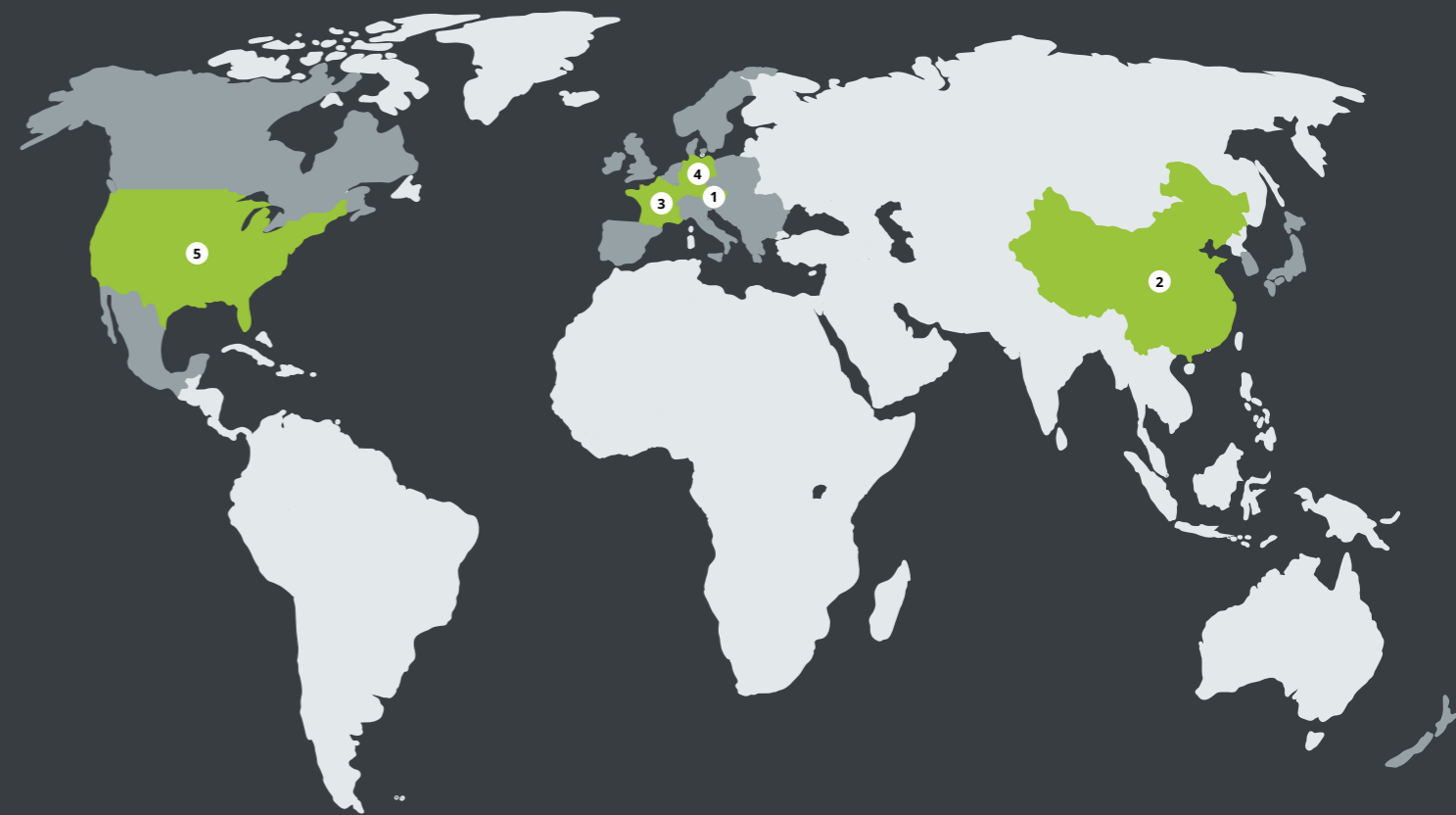
# Behind every big dream there are visionaries.

## Solving your challenges is our passion.

A solution that can be used to automate entire processes in just a few hours without any structural changes to your infrastructure. To set new standards. And redefine the status quo. Enjoy standardized transports and undisrupted material flow, handled fully automatically by our AMRs. And increase the efficiency of your material handling processes despite an increasingly challenging labor market.

## We think in solutions.

We develop the world's easiest AMR solutions to meet the true needs of our customers' material handling processes. Our team accompanies clients throughout the entire life cycle, engaging collaboratively in solution design, taking charge of initial commissioning, providing consulting services for performance enhancement, and offering lifetime services. From project management to implementation and subsequent workflow adjustments, our robots deliver unparalleled ease of operation at every stage of the life cycle.



We are a team of inventors, creators, experts, progressive forward thinkers, driven by technology leadership and the passion for solving your challenges. We want to make our customers' life easier and by keeping that in mind, we have developed the world's easiest Autonomous Mobile Robot (AMR) solutions by redefining material handling.

### REFERENCES

**SIEMENS**

**Mondelēz**  
International

**BOSCH**

**BMW GROUP**

### OUR LOCATIONS

- 1 Austria - Headquarters
- 2 China
- 3 France
- 4 Germany
- 5 North America

### OUR SALES PARTNERS

- Benelux
- Czech Republic
- Denmark
- Finland
- Greece
- Hungary
- Ireland
- Israel
- Italy
- Japan
- New Zealand
- Poland
- South Korea
- Spain
- Sweden
- Switzerland
- United Kingdom

# We believe in the simplicity of things.

## FLEXIBILITY

---

**Being flexible is a guarantee of success.**

Just one click and the AMRs quickly and flexibly react to changing requirements. Create, move or change individual stations, map designs or entire workflows. Independently and without any additional costs.

## UNIQUE SIMPLICITY

---

**Because it's about ease of use.**

Our technology is absolutely easy to use in all facets. Because everything we develop is rooted in our user-first engineering philosophy. Hardware, controls, software and cloud architecture are in-house developed and highly integrated to make your life easier - from commissioning to operation, maintenance, control and subsequent changes to workflows.

## SUPPLY CHAIN

---

**Simply no more standstill. 24/7.**

Compensate fluctuations in the dynamic material flow with absolute flexibility. In the event of a robot failure, the other AMRs of the swarm take over to ensure a secured flow of goods. Avoid any undersupply and optimize the throughput times of your transport routes fully automatically. Thanks to super-fast charging, AMR is ready for use again in just a few minutes. Perfect material flow.

## X-SWARM TECHNOLOGY

---

**One for all. All for one. All for you.**

All of our AMRs communicate directly, exchanging information about their position and current status several times per second. Distribute orders intelligently. Supply and dispose of goods automatically, find free routes and easily adapt to changes in the environment.

## SAFETY

---

**By the way - and of course - it's also absolutely safe.**

Our AMRs can seamlessly use the same travel and transport routes as your employees without any incidents. A large number of safety sensors and the flexible 360° protective field enable efficient operations in mixed traffic scenarios. Our AMRs are certified to comply with a variety of industry safety standards (e.g. CE, UL, ISO 3691-4).

## PLUG & PERFORM

---

**It's as easy as that.**

Thanks to our Plug & Perform technology, you can implement our AMRs in less than 12 hours and change workflows within minutes. Save yourself weeks and high commissioning costs and easily integrate 3rd party modules such as (high-)speed doors and IT systems. Our AMRs are designed to be open for communication, utilizing Wi-Fi connectivity for seamless interaction and control.



# The simplest technology, designed specifically for your needs.

## FEATURES AND ADD-ONS

### OBSTACLE AVOIDANCE

Additional 3D sensor system in the direction of travel to increase safety in human-machine mixed environments.

### SIGNAL LIGHT PACKAGE

Light signal to increase safety in human-machine mixed environments (blue, green, red), additional signal lights in the fork tips (white, yellow).

### CHARGING DEVICES

Mobile and stationary charging devices available.

### OCF LIFTING AIDS

Only available for OCF.

### ESD PROTECTION

Protection or discharge measure for operation in areas with ESD requirements to prevent electrostatic charging.

### RUBBER GUARDS

Rubber guards as dirt deflectors in the front area of the AMR and on the fork tips.

### BARCODE READER

Scanner for detection of barcodes and QR codes.

### LHD CONNECTOR

Interface to BCO.



### AGILOX ODM

- dollies
- floor-to-floor
- < 300 kg | 661 lbs

### AGILOX OCF

- pallets & custom-tailored load carriers
- floor-to-station
- < 1,500 kg | 3,306 lbs

### AGILOX OPS

- pallets & platform
- station-to-station
- < 1,500 kg | 3,306 lbs

### AGILOX ONE

- pallets & custom-tailored load carriers
- floor-to-floor
- < 1,000 kg | 2,204 lbs



AGILOX ONE



AGILOX OCF



# ONE

Combining the best features, AGILOX ONE is the compact and agile floor-to-floor AMR that easily transports pallets through narrow aisles. Designed to meet all your specific needs, it is available in different fork lengths. Equipped with an optional double scissor lift, it can also lift goods up to 1,000 mm | 39.4 in.

**NFK** – Narrow Fork, is the mono fork for narrow load carriers.

**BCO** – With the Box Carrier, boxes and trays can be moved effortlessly.



AGILOX ONE (SINGLE SCISSOR)

MAX. LIFT WEIGHT	MAX. LIFT HEIGHT	TURNING CIRCLE	MAX. SPEED
<b>1,000 kg</b> <b>2,204 lbs</b>	<b>620 mm</b> <b>24.4 in</b>	<b>2,100 mm</b> <b>82.7 in</b>	<b>1.4 m/s</b> <b>4.6 ft/s</b>

# OCF

Reaching new heights, the AGILOX OCF is the omnidirectional counterbalanced floor-to-station AMR that lifts and transports heavy loads on open and closed pallets through narrow aisles. Designed to meet all your specific needs, it is available in different configurations (lift capacity, fork length, lift height) and can fulfill easy to complex material handling tasks in your operations.



AGILOX OCF

MAX. LIFT WEIGHT	MAX. LIFT HEIGHT	TURNING CIRCLE	MAX. SPEED
<b>1,500 kg</b> <b>3,306 lbs</b>	<b>1,600 mm</b> <b>63 in</b>	<b>3,500 mm</b> <b>137.8 in</b>	<b>1.4 m/s</b> <b>4.6 ft/s</b>





AGILOX ODM



AGILOX OPS

# ODM

Awarded with the IFOY award for the best product in 2023, the AGILOX ODM is the smallest AMR in the portfolio, designed to quickly move dollies from spot to spot.

# OPS

Pushing boundaries to a new level with the AGILOX OPS, the flexible station-to-station platform AMR that is designed for the swift transportation of heavy loads in narrow aisles and limited spaces.



## AGILOX ODM

MAX. LIFT WEIGHT

**300 kg**  
**661 lbs**

MAX. LIFT HEIGHT

**250 mm**  
**9.8 in**

TURNING CIRCLE

**1,700 mm**  
**66.9 in**

MAX. SPEED

**1.4 m/s**  
**4.6 ft/s**

## AGILOX OPS

MAX. LIFT WEIGHT

**1,500 kg**  
**3,306 lbs**

MAX. LIFT HEIGHT

**100 mm**  
**3.9 in**

TURNING CIRCLE

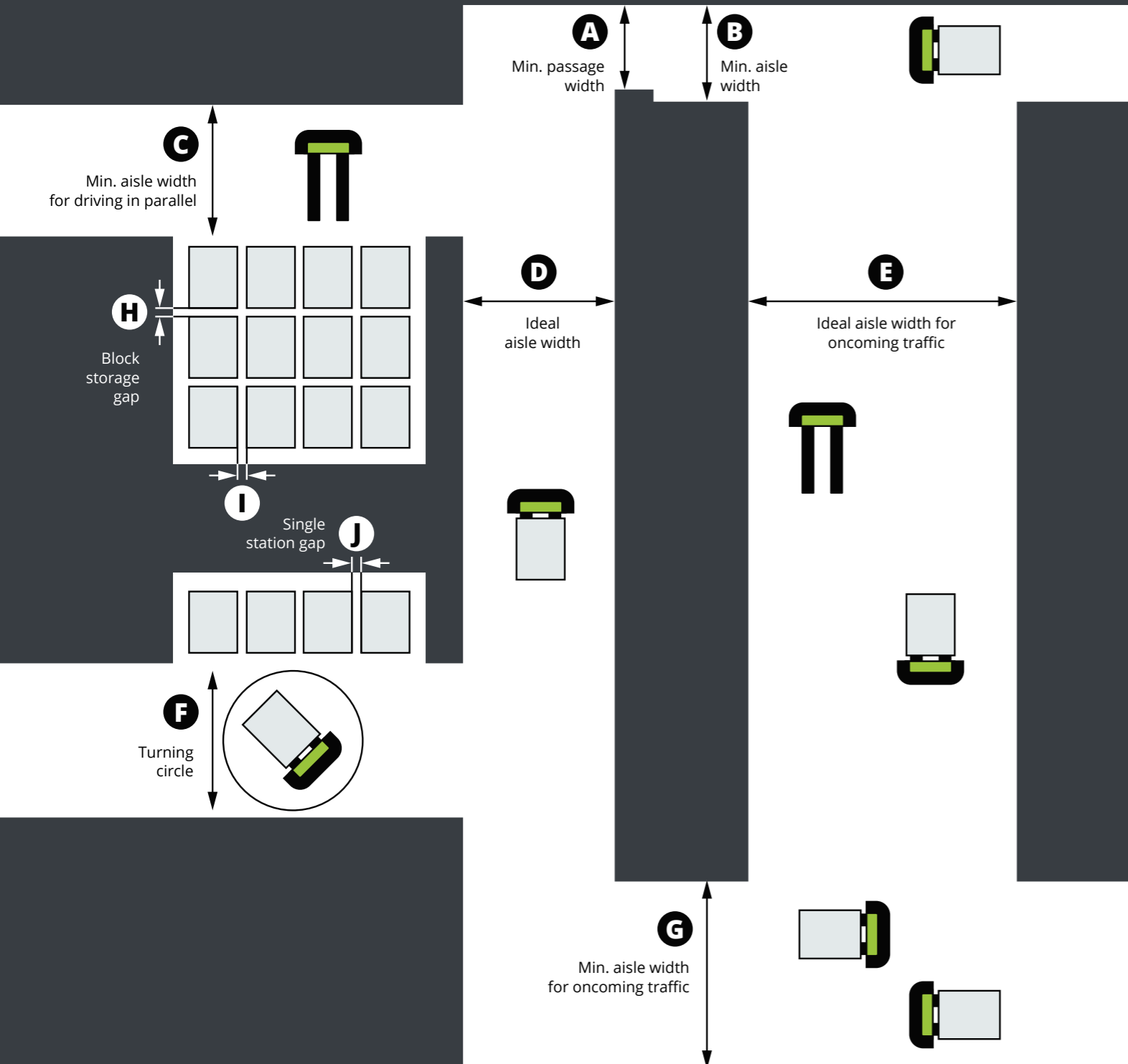
**2,000 mm**  
**78.7 in**


MAX. SPEED

**1.9 m/s**  
**6.2 ft/s**

# Unrestricted freedom of movement

No matter how specific your ever evolving challenges are, our intelligent solutions fit anywhere - inside individually shaped buildings, around pillars and narrow aisles.



CRITERIA		ONE (+NFK)	OCF	ODM	OPS
<b>LOAD CARRIER</b>		Pallet 1,200 x 800 mm 47.2 x 31.5 in	Open & closed pallet 1,200 x 1,200 mm 47.2 x 47.2 in	Dolly 600 x 400 mm 23.6 x 15.7 in	Pallet / Platform 1,200 x 800 mm 47.2 x 31.5 in
<b>MIN. PASSAGE WIDTH</b>	<b>A</b>	1,400 mm 55.1 in	1,700 mm 66.9 in	-	1,500 mm 59.1 in
<b>MIN. AISLE WIDTH</b>	<b>B</b>	1,600 mm 62.9 in	2,100 mm 82.7 in	1,000 mm 39.4 in	1,600 mm 62.9 in
<b>MIN. AISLE WIDTH (PARALLEL)</b>	<b>C</b>	1,800 mm 70.9 in	3,200 mm 126 in	1,300 mm 51.2 in	-
<b>IDEAL AISLE WIDTH</b>	<b>D</b>	2,000 mm 78.7 in	2,700 mm 106.3 in	1,700 mm 66.9 in	1,800 mm 70.9 in
<b>IDEAL AISLE WIDTH (TWO-WAYS)</b>	<b>E</b>	2,900 mm 114.2 in	3,800 mm 149.6 in	2,500 mm 98.4 in	-
<b>TURNING CIRCLE</b>	<b>F</b>	2,100 mm 82.7 in	3,500 mm 137.8 in	1,700 mm 66.9 in	2,000 mm 78.7 in
<b>MIN. AISLE WIDTH (TWO-WAYS)</b>	<b>G</b>	2,600 mm 102.4 in	3,200 mm 126 in	1,800 mm 70.9 in	-
<b>BLOCK STORAGE GAP</b>	<b>H</b>	50 mm 2 in	100 mm 4 in	-	-
<b>BLOCK STORAGE GAP</b>	<b>I</b>	200 mm 7.9 in	200 mm 7.9 in	50 mm 2 in	-
<b>SINGLE STATIONS</b>	<b>J</b>	100 mm 4 in	100 mm 4 in	-	-

The specification above is an example for a drive surface design. The design is dependent on the load carriers in use.



# Redefine your performance with the help of digital services.



## AGILOX APPLICATIONS

---

### **ANALYTICS**

All in one. A cloud-based platform to analyze your data. To check the performance of individual AMRs and the entire swarm. Personalized for your needs. Your views, filters and shift models.

### **ACADEMY**

It's all about your knowledge. Online courses, videos and tutorials. To make you an expert for the entire AGILOX system. From basics to advanced. Easy to consume. Easy to understand.

### **DOCS**

Details about the complete system and product lineup, operating software, and other related information. This includes product specifications as well as operational guidelines, requirements, maintenance and safety aspects. Additionally, comprehensive coverage on our HMI, which lives right and its various visualization and configuration possibilities.

## It's a perfect match: The Human Machine Interface.

Find your perfect tech companion with our Human Machine Interface, which lives right inside AMRs. This direct integration means you're free from the hassle of maintaining another server. Accessible from any device with a browser, it empowers you to configure, fine-tune, and command AMRs anytime, anywhere.

Dive into the action with real-time tracking of AMRs throughout your facility, enriched with layers of data like heatmaps, live sensor scan data, and swarm performance metrics. Get creative with the possibilities to set up workflows, change tasks manually and explore a wealth of customization options.



